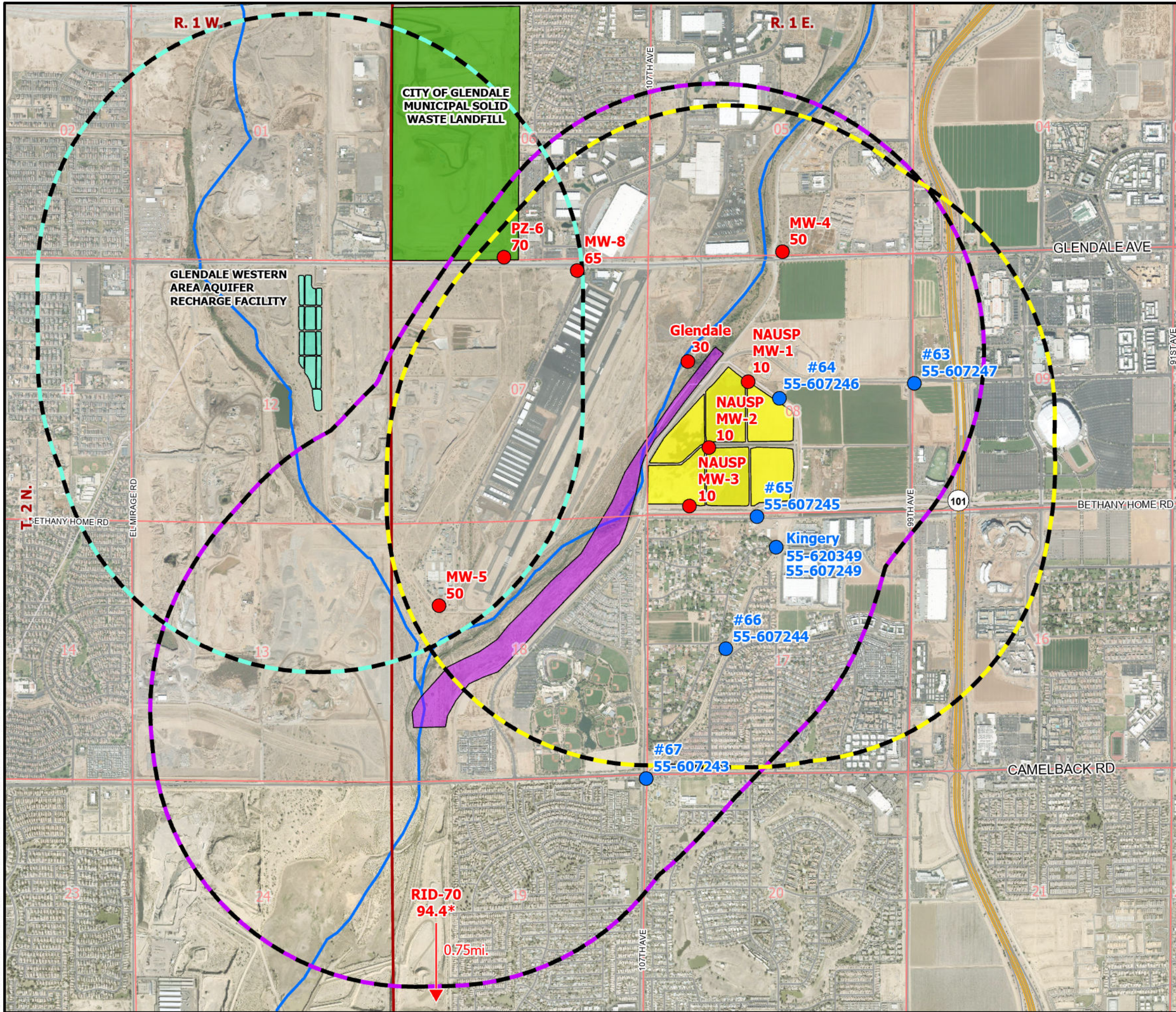


Path: S:\MyDocs\SG\CFR\2024\24-0527 Recharge_Recovery Wells - Confidential\GIS\APRX\24-0527 Recharge Recovery Wells.aprx



EXPLANATION

- RID Well
- NAUSP Monitor Well With Alert Level (ft bls)
- Glendale Landfill
- Glendale Western Area Aquifer Recharge Facility
- Glendale Western ARF- Buffer(1 mile)
- SRP NAUSP Active Basin
- SRP NAUSP Inactive Basin
- SRP NAUSP Active- Buffer (1 mile)
- SRP NAUSP Inactive- Buffer (1 mile)
- Township
- Section

Notes
 Service Layer Credits: World Imagery: City of Glendale, Maxar
 World Street Map: City of Glendale, Esri, TomTom, Garmin, FAO, NOAA, USGS, Bureau of Land Management, EPA, NPS, USFWS, AZGS, ADWR
 ft bls- feet below land surface

CONFIDENTIAL

0 1 Miles

WELL LOCATION MAP

DRAFTED BY: RU DATE: 08/14/2024	APPROVED BY: EM DATE: 08/14/2024
MATRIXNEWORLD Engineering Progress	
Matrix New World Engineering, PC 3033 North 44th Street, Suite 270 Phoenix, Arizona 85018 Tel: 602-958-5647 Fax: 602-958-7585 www.mnw.com	
RID RECOVERY WELL INVESTIGATION CONFIDENTIAL GLENDALE, ARIZONA	
FIGURE NUMBER: 1	
PROJECT NUMBER: 24-0527	